



Monroe SnowFighter Package

NOW AVAILABLE!

Ford F-450
& Ford F-550
V-10 Gas or
Diesel Engine



Visit us Online at
www.monroetruck.com



**SNOW
FIGHTER**

MTE-Zee Dump Body

- Available in Stainless Steel or Mild Steel
- 16" H Sides; 22" Tailgate
- Dirt Shedding Top Rails and Tailgate
- H.D. Front Bulkhead with Tapered Cab Protector & Tapered Laser Cut Window
- Subframe Hoist - 9.8 Ton Lifting Capacity
- Electric Backup Alarm
- Black Solid Core Poly Side Boards
- Minimizer Poly Fenders with Steel Hardware
- 2 Stainless Steel Spring Loaded Shovel Holders
- Undercoated Understructure
- 5-Year Warranty

Heavy Duty Rear Hitch

- 2.5" Receiver Tube in ½" Plate
- Built-in ICC Bumper for Under-ride Protection
- Built-in Chain Loops
- 100% Powder Coated Black

Monroe 6" One-Way Flight Under-Tailgate Spreader

- ¼" End Plate - 7 ga. Trough
- Full Opening Top and Bottom Clean-Out Doors
- Stainless Steel or Mild Steel Construction
- Self Leveling Spinner Assembly
- Tailgate Shields and Quick Detach Mounting Brackets
- LED Stop/Turn/Tail Lights with Stainless Steel Guards



www.monroetruck.com



SNOW FIGHTER

ADDITIONAL OPTIONS AVAILABLE



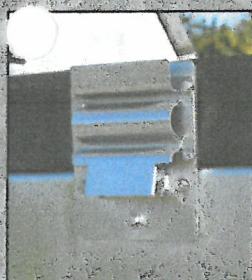
Force America Hydraulic Package with SSC5100 EX Spreader Control

- PTO with Direct Mount Pump - Mono-block Manifold Valve Assembly
- Rocker Switch for Hoist Control
- Double Acting Electric Control Hoist Section with a 500 PSI Down Port Relief
- 13 Gallon Stainless Steel Hydraulic Reservoir/Enclosure Assembly
- BOSS Double Acting Electric Control



BOSS Heavy Duty V-DXT Snowplow

- Dual Trip Technology Trip Edge/Full Trip
- 1/2" x 6" High Performance Cutting Edge
- 4 Extension Springs for Full Moldboard Trip
- 6 Torsion Trip Springs for Trip Edge
- SmartShield Powder Coat Finish
- 2" x 10" Chain-less Hydraulic Cylinder Lift
- Reinforced Moldboard
- Rubber Snow Deflector
- SmartLight 2
- SmartHitch 2
- H.D. Push Frame and Quadrant
- 2-Year Limited Warranty



Lighting System

- Monroe/Whelen Responder Series LED Mini Light Bar, Amber, MTRILPPA with Self Leveling Bracket
- Whelen TIR3 Super LED Warning Lights - Rear Posts
- Spreader Light



SNOWFIGHTER MAX With Monroe Para-Glide Mini Wing

- Para-Glide Trailing Arm Head Assembly
- 8' 12ga. Moldboard
- Integrated into Boss Plow Hitch

SNOW FIGHTER MAX

MONROE
TRUCK EQUIPMENT

MONROE TRUCK EQUIPMENT
1051 W. 7th Street Monroe, WI 53566
PH: 800-978-8785
www.monroetruck.com

Manufactured Bodies
Durable • Versatile
Dependable



1151 W Main Avenue
DePere, WI 54115
Sales Rep: Troy Redfearn
Ph: (920) 360-4446
www.MonroeTruck.com

J.O. #

Quotation ID: 2MAW002725-1

Date: 2/17/2021

Valid thru: 3/19/2021

Terms: NET 30

Quoted by: Mark Woelfel

Ph/Fax: 920-347-4181 / 920-336-8118

Quoted to:

GILLETT, CITY OF (ATTN:)
150 N. MCKENZIE AVE.
GILLETT, WI 54124
Ph: 920-855-2255 / Fax: 920-855-2683
Email:

Chassis Information

Year: 2020	Make: FORD	Model: F-550	Chassis Color:	Cab Type: REGULAR
Single/Dual: DRW	CA: 84.0	CT: -1.0	Wheelbase: 169.0	Engine: GAS
			F.O. Number #:	Vin:

Notes:

Monroe Truck Equipment, Inc. is pleased to offer the following quote for your review:

Description

Amount

MTE-ZEE 11', STAINLESS STEEL, 2-3 YD CAPACITY, RIGID SIDE, DUMP BODY
- 10 GA. FLOOR, 10 GA. SIDES & ENDS, 11" H DOUBLE WALL SIDES, 17" H TAILGATE
- 45,000 PSI YIELD STRENGTH STAINLESS STEEL FLOOR, SIDES & ENDS
- HEAVY DUTY FRONT BULKHEAD WITH TAPERED LASER CUT WINDOW & INTEGRAL 12" TAPERED CAB SHIELD (GM MEDIUM-DUTY BODY TO HAVE FULL-WIDTH SQUARE CAB SHIELD IN LIEU OF TAPERED)
- INTERNAL DIRT SHEDDING TOP RAILS & TAILGATE
- WESTERN-STYLE UNDERSTRUCTURE WITH 10 GAUGE LONG-MEMBERS
- SINGLE-LEVER RELEASE, QUICK DROP TAILGATE
- (2) UNDERBODY TIE LOOPS
- L.E.D. FMVSS108 LIGHTS & REFLECTORS
- REAR REAR FLAPS
- STAINLESS STEEL FINISH

LESS-HYDRAULICS SUB-FRAME HOIST (CHAMPION)

BACKUP ALARM

MTE/FORCE AMERICA HYDRAULICS PACKAGE (ELEC HOIST/BOSS PLOW W/ SMART HITCH (SPIN/AUG)) STAINLESS STEEL
- MANIFOLD VALVE ASSEMBLY
- 13 GALLON CAPACITY STAINLESS STEEL HYDRAULIC RESERVOIR/ENCLOSURE WITH INTERNAL FILTER
- FILLER/BREATHER CAP, LEVEL/TEMP SIGHT GLASS, 3/4" MAGNETIC PLUG
- FILTER CONDITION INDICATOR
- WEATHER TIGHT COVER
- HYDRAULIC RESERVOIR/ENCLOSURE WILL BE MOUNTED ON FRAME RAIL
* ELECTRIC TOGGLE SWITCH TO OPERATE HOIST
- FORCE 3100 SPREADER CONTROL
- MISCELLANEOUS HOSES & FITTINGS
- SUCTION STRAINER

FORD PTO / PUMP
HOSES & FITTINGS RAN TO REAR FOR FUTURE V-BOX SPREADER

TRUCKSIDE BOSS TO WORK WITH EXISTING BOSS PLOW
- UNDERCARRIAGE
- 13 PIN TRUCK SIDE WIRING HARNESS
- INSTALLED ON NEW TRUCK
* DOES NOT INCLUDE PLOW OR CONTROLLER

LIGHTING:
- LED LIGHTBAR MOUNTED ON CABSHIELD
- 1 LED S/T-BACK-UP COMBO AND (2) LED STROBES RECESSED IN S/S LIGHTBOXES ON REAR POST
- LED STROBE LIGHTS RECESSED IN RUBRAIL, MID BODY

Quote Total: \$26,737.00



Additional Options:

Description	Amount	Add to quote? Yes / No
MONROE TO SUPPLY AND INSTALL: 2-1/2" RECEIVER IN 1/2" PLATE 10 TONGUE CAPACITY / 18,000 TOWING CAPACITY AY RV TRAILER RECEPTACLE	\$638.00	Yes / No
POLY FENDERS ILO REAR RUBBER FLAPS	\$1,251.00	Yes / No
BOSS 10' V-DXT PLOW - SMARTHITCH 2 - SMARTTOUCH 2 CONTROLLER - SL3 L.E.D. LIGHTING W/ ICE SHIELD TECHNOLOGY - SMARTSHIELD - SMARTLOCK CYLINDERS - ENCLOSED HIGH-PERFORMANCE HYDRAULIC PACKAGE - CHAINLESS HYDRAULIC CYLINDER LIFTING SYSTEM - DUAL TRIP DESIGN - REINFORCED MOLDBOARD WITH FLARED WINGS - HEAVY-DUTY PUSH FRAME - INSTALLED - TWO-YEAR LIMITED WARRANTY * RUBBER SNOW DEFLECTOR, INSTALLED	\$9,797.00	Yes / No
LED WORK LIGHT, EACH	\$210.00	Yes / No

Terms & Conditions

- Terms are Due Upon Receipt unless prior credit arrangements are made at the time of order.
- Please note if chassis is furnished, it is as a convenience and terms are Net Due on Receipt of Chassis.
- State and Federal taxes will be added where applicable. **Out-of-state municipal entities may be subject to Wisconsin sales tax.**
- Restocking fees may be applicable for cancelled orders.
- MTE is not responsible or liable for equipment that does not meet local/state regulations if those laws are not made known at time of order.

By signing and accepting this quote, the customer agrees to the terms listed above and has confirmed that all chassis information listed above is accurate to chassis specs.

Assign (Required for all pool units):	<input type="checkbox"/> Fleet	<input type="checkbox"/> Retail	Customer P.O. Number:	Dealer Code:	Sourcewell Member Number:
MSO/MCO (ONLY check if legally required):	<input type="checkbox"/> MCO	<input type="checkbox"/> MSO			
Customer Signature:				Date of Acceptance:	

2/17/2021

IMS2 CNGP530 VEHICLE ORDER CON

VIRTC1DP V4.58 5432 EN

CNGP530

VEHICLE ORDER CONFIRMATION

0

==>

2021 F-SERIES SD

Order No: 9999 Priority: E4 Ord FIN: KP950 Order Type: 5B
 Ord PEP: 660A Cust/Flt Name: GILLETTE PO Number:

RETAIL

RE

F5H	F550 4X4 CHAS/C	\$43970			FRT LICENSE BKT	
	169" WHEELBASE			18B	PLAT RUNNING BD	✓
HX	ANTIMATTER BLUE				TPMS DELETE	
A	VNYL 40/20/40				18000# GVWR PKG	
S	MEDIUM EARTH GR			425	50 STATE EMISS	
660A	PREF EQUIP PKG			473	SNOW PLOW PREP	✓
	.XL TRIM			52B	BRAKE CONTROLLER	✓
572	.AIR CONDITIONER	NC		525	CRUISE CONTROL	✓
	.AMFM/MP3/CLK					
99N	7.3L DEV V8 ENG	NC	✓		TOTAL BASE AND OPTIONS	4
44G	10-SPD AUTOMATC	NC			TOTAL	4
TGJ	225 BSW AP 19.5				*THIS IS NOT AN INVOICE*	
X8L	4.88 LTD SLIP	360	✓			
90L	PWR EQUIP GROUP	865	✓		* MORE ORDER INFO NEXT P	
	FLEET SPCL ADJ	NC			F8=Next	

2/17/2021

IMS2 CNGP530 VEHICLE ORDER CON

VIRTC1DP V4.58 5432 EN

CNGP530

VEHICLE ORDER CONFIRMATION

0

==>

2021 F-SERIES SD

Order No: 9999 Priority: E4 Ord FIN: KP950 Order Type: 5B
 Ord PEP: 660A Cust/Flt Name: GILLETTE PO Number:

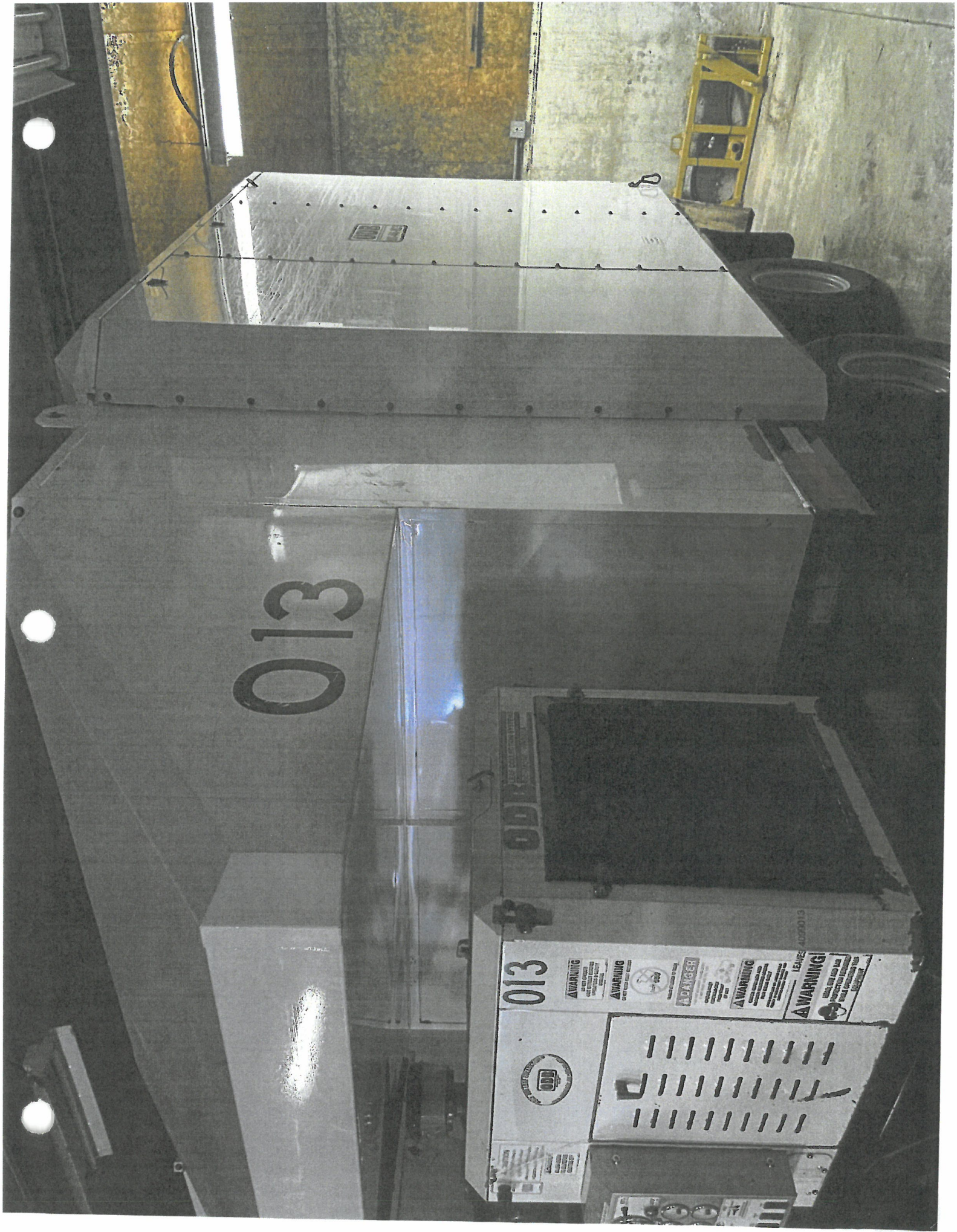
RETAIL

RE

	TELE TT MIR-PWR		
65Z	AFT AXLE TANK	NC	
67B	397 AMP ALTRNTR	115	✓
76C	EX BACKUP ALARM	140	✓
86M	DUAL BATTERY	210	✓
872	RR CAM & PREP K	415	✓
	SP DLR ACCT ADJ		
	SP FLT ACCT CR		
	FUEL CHARGE		
B4A	NET INV FLT OPT	NC	
	DEST AND DELIV	1695	

21 MODEL CONFIGURED
 N/A FOR ORDER SET
 22 PRICES NOT AVAILABLE
 TUE MAR 2/21

ESTIMATE ONLY
 \$40,000 APPROXIMATE
 COST FOR
 22



013

013



WARNING

WARNING

WARNING

WARNING

WARNING

WARNING

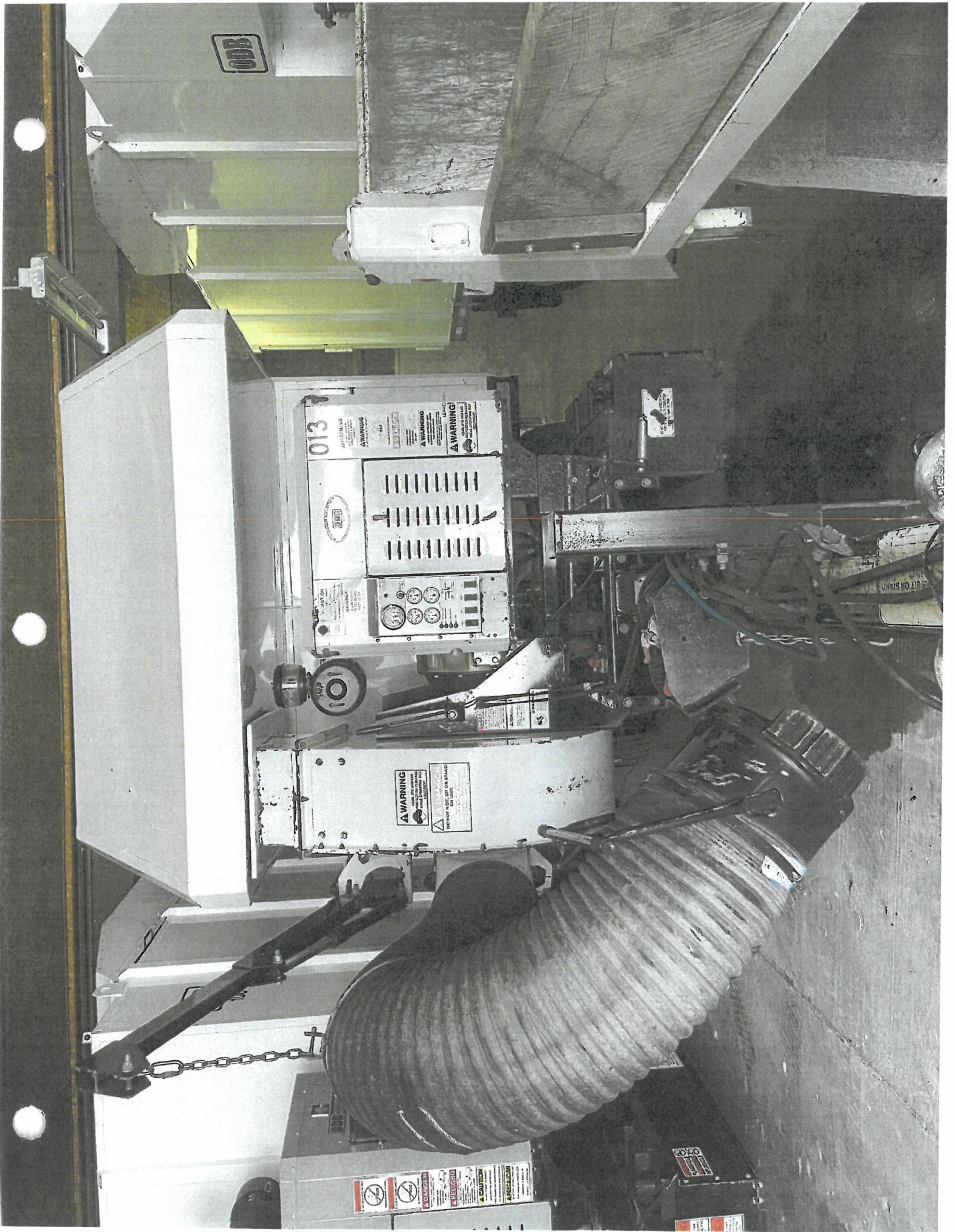
WARNING

WARNING

WARNING

WARNING

WARNING



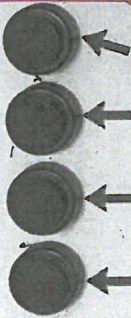
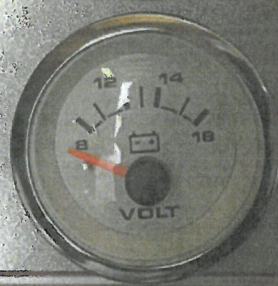
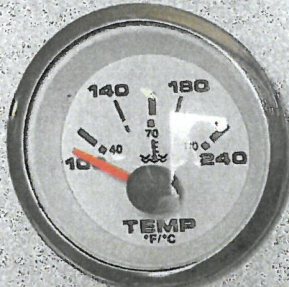
977 HRS ON PREV. TEST



**SAFETY
SHUT OFF**
PUSH TO START



**IGNITION
SWITCH**
START 8308



LOW OIL PRESSURE
(ON WHEN ENGINE NOT RUNNING)

HIGH WATER TEMP.

TRAP DOOR OPEN

E-STOP

PTO

DISENGAGED ENGAGED

**DO NOT START OR STOP
ENGINE WITH PTO ENGAGED**



6307

STAY BACK
FREQUENT BACKING
AND TURNING



WARNING
DO NOT
REAR
END
LOAD



STAY BACK
FREQUENT BACKING
AND TURNING

This is an updated proposal for the provision of groundwater monitoring services at the City of Gillett landfill. Lemmenes Hydrometric Services is fully equipped to conduct field sampling and analyses according to the Groundwater Sampling Field Manual (Wisconsin Department of Natural Resources, September, 1996), and offers sub-contracted laboratory analyses through Baddger Labs in Neenah (WDNR #445023150).

Extent of Services

Groundwater monitoring at the City of Gillett landfill requires the semi-annual (June and December) sampling of six wells (001, 002, 003 005, 006, and 007). Sampling during each monitoring period will commence at the upgradient well and progress in the order of increasing contamination potential, as suggested by the results of previous sampling. At each well, groundwater elevation measurements will be followed by the purging of stagnant water, sampling, field analyses, filtration, and sample preservation. Equipment contacting groundwater will be triple-rinsed with deionized water between wells to prevent the transfer of contaminants.

Groundwater elevation will be determined in relation to the surveyed height of each well casing with a sounding device attached to an engineering tape-measure. The height and volume of standing water will then be calculated from known well dimensions. Wells that recharge rapidly will be purged of four standing water volumes with a PVC or stainless steel bailer prior to sampling. Wells that can be purged dry will be allowed to recharge one half of their standing water volume prior to sampling.

Samples will be collected with a bailer and dispensed into separate bottles for field and laboratory analyses. Field tests consist of temperature, conductivity (corrected to 25 degrees Celsius), pH, and observations of turbidity, color, and odor. Samples from each well will also be analyzed for filtered chloride, total filtered alkalinity, filtered sulfate, filtered sodium, and total filtered hardness at the sub-contracting laboratory. Field filtration through a glass fiber pre-filter and a 0.45 micron membrane filter will precede dispensing into separate bottles for the various analyses. In addition, during June of each year, unfiltered samples will be collected and tested for volatile organic compounds (VOCs). The sample portions for hardness and sodium testing will be preserved with nitric acid to a pH of less than two standard units. The sample portions for VOC testing will be preserved with hydrochloric acid in septum lined vials. All samples will be placed on ice during transport to the laboratory. Analyses will be conducted in accordance with methods approved by the United States Environmental Protection Agency.

Results will be reported to the DNR on computer diskette and on paper to the City of Gillett within approximately five weeks of sample collection. If necessary, a separate report of any groundwater standard exceedances will be prepared and submitted with the results.

Cost of Services

Lemmenes Hydrometric Services will supply all of the equipment and labor necessary to perform the services described above, including sub-contracted laboratory analyses, for a total cost of \$940.00 covering the December monitoring period of each year and for a total cost of \$1,610.00 covering the June monitoring period of each year. These prices will remain in effect through the December, 2023 monitoring period. Payment is due within 30 days of the invoice date. A one percent per month surcharge will be

was 800
was 1414.00

renters subapartment?
black bags?

CITY OF GILLETT

OFFICE OF THE CITY ATTORNEY

345 S. JEFFERSON STREET
GREEN BAY, WISCONSIN 54301

TELEPHONE: (920) 432-3381
FAX: (920) 432-4037

GARBAGE/RECYCLING CART REGULATIONS

ORDINANCE NO.
INTRODUCED:
SECONDED BY:

~~no bin~~
~~not removed from city~~

THE COMMON COUNCIL OF THE CITY OF GILLETT, WISCONSIN, DOES ORDAIN that **Chapter 15, Nuisances, Section 15-7 Garbage/Recycling Cart Regulations**, is hereby recreated and amended as follows:

Placement of Carts for Pickup: Garbage and recycling carts shall be placed behind the curb and on either the terrace or driveway no earlier than twelve (12) hours prior to normal pickup time. Handles of the cart must face the roadway. Carts must be removed by 7:00 p.m. on the day of pickup. No cart may be placed in the road or in front of the curb at the property. In the winter months, no cart may be placed on top of the snowbanks or in front of a snowbank.

Storage of Garbage/Recycling Carts: Garbage and recycling carts must be stored in the backyard, garage or any other discreet location provided that the carts are concealed from view.

Placement of Trash/Recycling in Carts: All trash must be in a garbage bag designed specifically for garbage and placed within the cart. All recycling may be placed directly in cart without the use of a bag. All trash and recycling must be placed in the cart with the cover closed. No trash or recycling may be placed on top of or next to the cart. Any trash or recycling that is not within the cart will not be picked up.

Assignment and Responsibility of Carts: The carts will be assigned to each address and must remain at that address even if the property is transferred to a third party. The property owner(s) is responsible for the cleanliness of the cart, lost carts, and any damage to the cart. Additional carts can be purchased through the City of Gillett at current market prices. *No bins may be removed from the city, including additional carts.*

Prohibited Items: No yard debris, concrete or rocks, ^{excessive} clothing, large pieces of metal, dirt, construction or remodeling debris, dead animals, and/or household hazardous waste (e.g. batteries, oil, oil filters, cleaning products, ^{wet} paints, stains, antifreeze, etc.) or any electronic devices (e.g. televisions, computers, monitors, DVD players, VCRs, printers, fax and copy machines, cell phones, etc.). These products are required to be disposed of at the recycling facility. If any of these prohibited items are found in a trash or recycle cart, the cart will not be emptied and a fine will be imposed.

This Ordinance shall take effect upon passage and publication provided by law.

of fee \$ 50 ↗

Adopted this 4 day of March, 2021.

____ Ayes, ____ Nays, ____ Abstain

Josh McCarthy, Mayor

Published: _____, 2021

Chelsea Anderson, Clerk/Treasurer

OCONTO COUNTY

16.117 Responsibilities of Owners or Designated Agents of Non-Residential Facilities and properties:

- (a) Owners or designated agents of non-residential facilities and properties shall do all of the following to recycle the materials specified in Sec. 16.111 (e) through (o):
 - (1) Provide adequate, separate containers for the recyclable materials.
 - (2) Notify in writing, at least semi-annually, all users, tenants and occupants of the properties about the established recycling program.
 - (3) Provide for the collection of the materials separated from the solid waste by the users, tenants, and occupants and the delivery of the materials to a recycling facility.
 - (4) Notify users, tenants and occupants of reasons to reduce and recycle, which materials are collected, how to prepare materials in order to meet the processing requirements, collection methods or sites, locations and hours of operation, and a contact person or company, including a name, address, and telephone number.
- (b) The requirements specified above do not apply to the owners or designated agents of non-residential facilities and properties if the postconsumer waste generated within the facility or property is treated at a processing facility licensed by the Department of Natural Resources that recovers for recycling the materials specified in Sec. 16.111(e) through (o) from solid waste in as pure a form as is technically feasible.

16.118 Proper Disposal of Garbage and Recyclables.

- (a) It shall be unlawful for any person to dispose of or dump solid waste in any street, alley, or private or public place within Oconto County. Solid Waste must always be completely stored within appropriate containers. Solid Waste cannot be stored on-site longer than 1 month and must be properly disposed of within one month of storage. Solid Waste must be placed in translucent bags and placed in the appropriate containers or at curbside in the manner and at times specified by this ordinance. THE USE OF NON-TRANSLUCENT BAGS MAY CONTINUE UNTIL JANUARY 1, 1995. THEREAFTER, USE OF TRANSLUCENT BAGS SHALL BE MANDATORY.
- (b) Antiscavenging of Unlawful Removal of Recyclables. It shall be unlawful for any person, unless under contract with or licensed by Oconto County or its municipalities, to collect or remove any recyclable material that has been deposited in any drop-off center or placed at the curb or in a container adjacent to a home or non-residential building for the purposes of collection for recycling.
- (c) No person shall place for collection any garbage at the curb not owned or occupied by such person.
- (d) It shall be unlawful to burn or bury solid waste and recyclables by residential and non-residential sectors, at construction or other sites within Oconto County.
- (e) It shall be unlawful to conduct open burning, except households may burn brush, leaves, weeds, stumps, trees, other vegetative debris, personal confidential papers and clean unpainted, untreated wood in accordance with the following provisions:
 - (1) All exempted open burning shall be conducted in a safe nuisance free manner, when wind and weather conditions are such as to minimize adverse effects and not create a health hazard or a visibility hazard on roadways, railroads or airfields. Open burning shall be conducted in conformance with all local and state fire protection regulations.