

REQUEST FOR PROPOSALS – **ADDENDUM #1: FAQs**  
CITY OF GILLETT –  
ZIPPEL PARK IMPROVEMENTS PROJECT  
OCONTO COUNTY, WISCONSIN

Frequently Asked Questions:

**Q1:** Is the playground contractor responsible for the concrete border around the PIP surface?

**A:** Yes

**Q2:** Can the size of the exact footprint of the playground be reduced without losing points?

**A:** Yes, assuming it is minimal and has the same general shape and all amenities requested in the RFP are met. This could potentially have a reduction in cost and MSA would revise the site design slightly to accommodate the size change. Contractor will be required to submit CAD or scaled drawings for reference.

**Q3:** Will the concrete sidewalk be installed prior to or after the playground?

**A:** The anticipated timeline is to install concrete sidewalk after the playground so there is no damage to the surrounding sidewalks, thus requiring the concrete border.

**Q4:** Is concrete still being supplied by Gillett Cement Products?

**A:** We're getting confirmation from our cement company on how much they will provide.

**Q5:** RFP states to add a concrete border. Most of the play area is surrounded by a sidewalk. Should we do curb in the areas with no sidewalk only?

**A:** **Initial response was that we don't need a curb, but the question was misinterpreted. Please see Q7 and Q8 below.**

**Q6:** We have completed two designs. Can we turn in both designs?

**A:** Yes, you can turn in both designs!

**Q7:** Will the 8' wide concrete sidewalks surrounding the playground be installed before the playground installation?

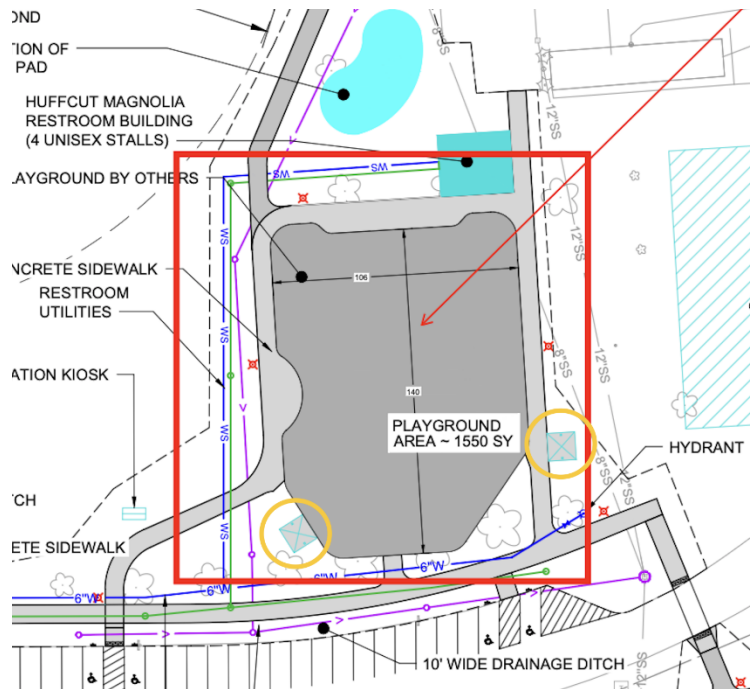
**A:** The preferred process will be to have the play equipment provider install the play area, including the curb, prior to the installation of the sidewalk. This will minimize any potential damage to the sidewalk.

**Q8:** The RFP mentions we are to supply play area curbing and I'm wondering if that is pertaining just to the "South" end without sidewalks?

**A:** The intent was to have the playground contractor supply the curbing for the entire perimeter of the playground to contain the PIP surface. The sidewalk would be poured after the playground installation is complete and directly adjacent to the curbing.

**Q9:** In the graphic below, could you please clarify what is intended for the areas circled in yellow? Are these designated locations for open shelters? If so, would you like us to include the shelters and/or associated seating in our playground proposal?

**A:** The yellow circles will be shade areas with benches or picnic tables. We are having them donated to us and not part of the playground RFP.



Published by the authority of the City of Gillett.

ARCHITECT/ENGINEER:  
MSA Professional Services, Inc.  
Dan Rammer  
(920) 931-0095  
[drammer@msa-ps.com](mailto:drammer@msa-ps.com)

City of Gillett  
Chelsea Anderson  
Clerk/Treasurer  
(920) 855-2255  
[chelsea.anderson@cityofgillett.wi.gov](mailto:chelsea.anderson@cityofgillett.wi.gov)

Attachments: None